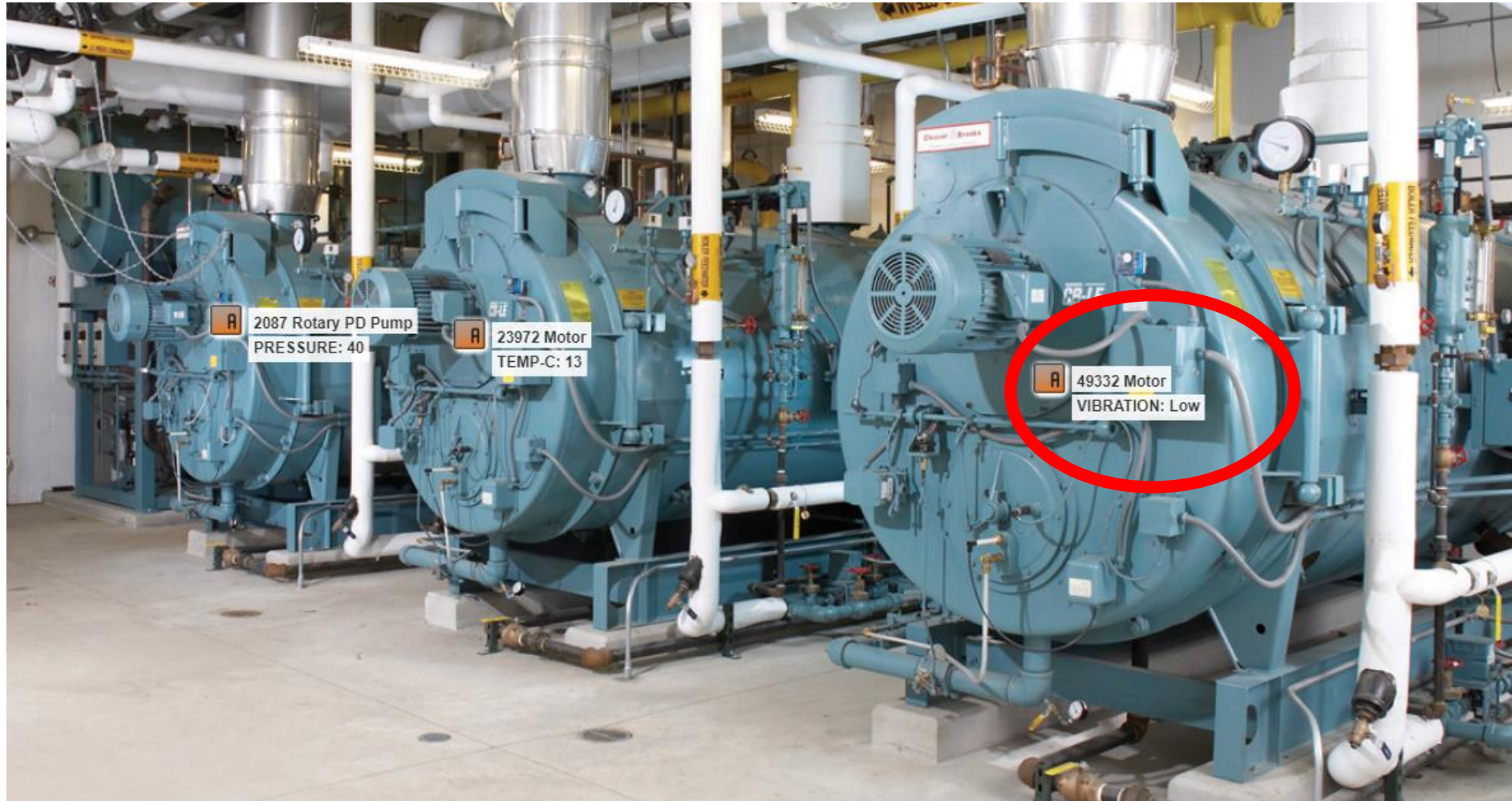
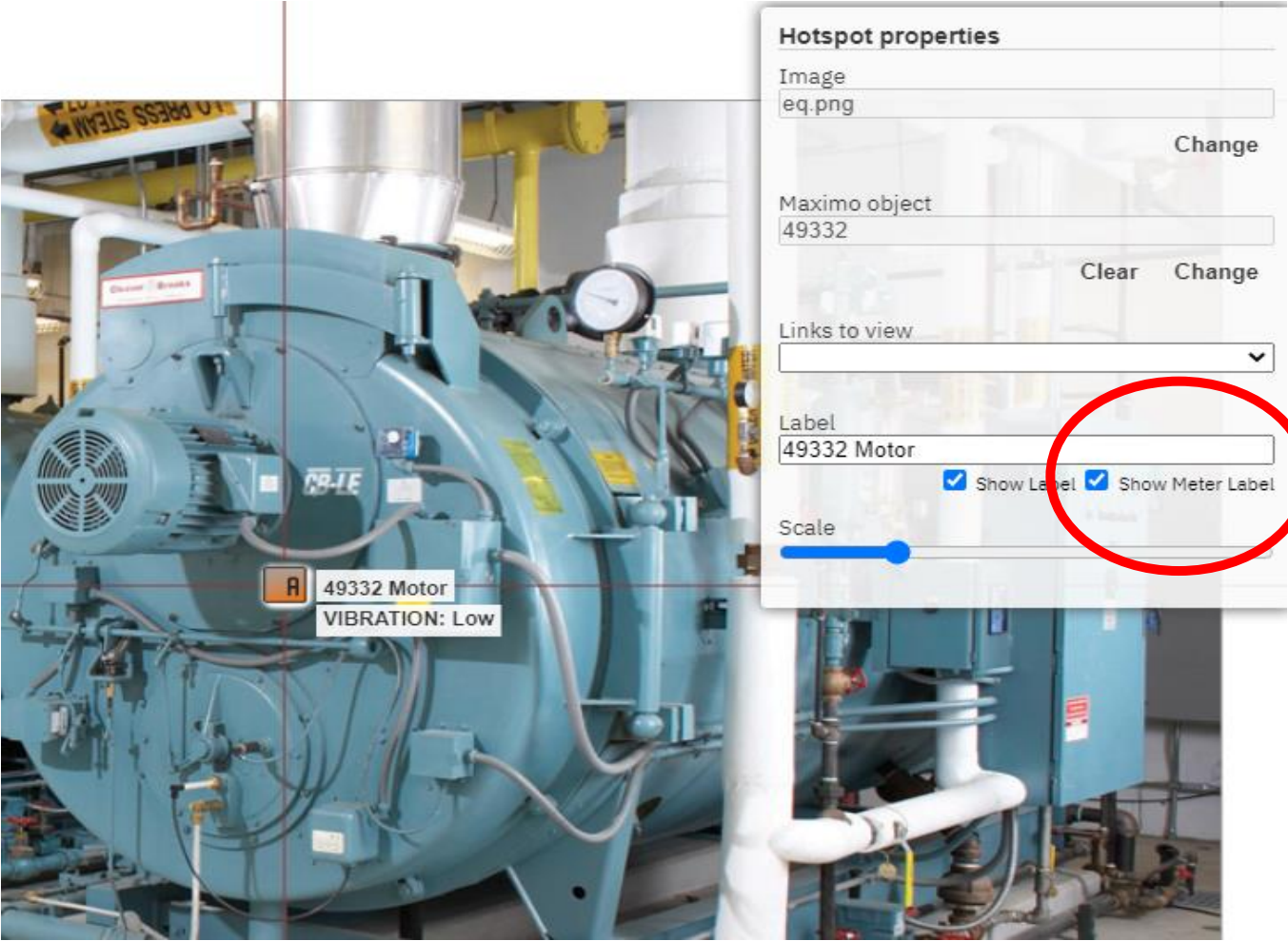


MaxNav Maximo Meters



MaxNav Meters / Editor



The image shows a screenshot of the MaxNav Editor interface. On the left, a large blue industrial motor is visible. A data label is overlaid on the motor, displaying "A 49332 Motor" and "VIBRATION: Low". On the right, a configuration panel titled "Hotspot properties" is shown. The panel includes fields for "Image" (eq.png), "Maximo object" (49332), "Label" (49332 Motor), and "Scale". Two checkboxes, "Show Label" and "Show Meter Label", are checked. The "Show Meter Label" checkbox is circled in red.

Hotspot properties

Image
eq.png

Change

Maximo object
49332

Clear Change

Links to view
▼

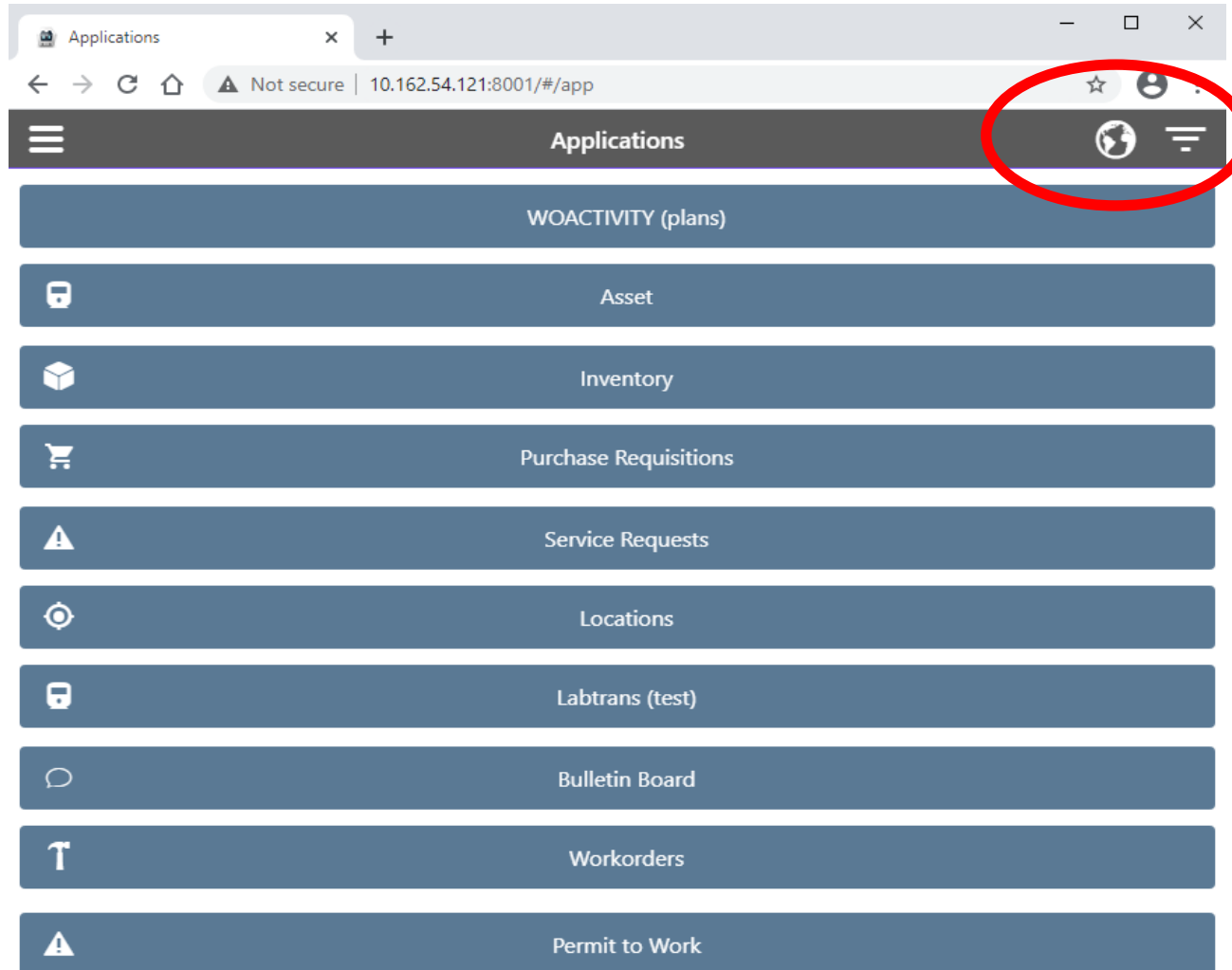
Label
49332 Motor

Show Label Show Meter Label

Scale

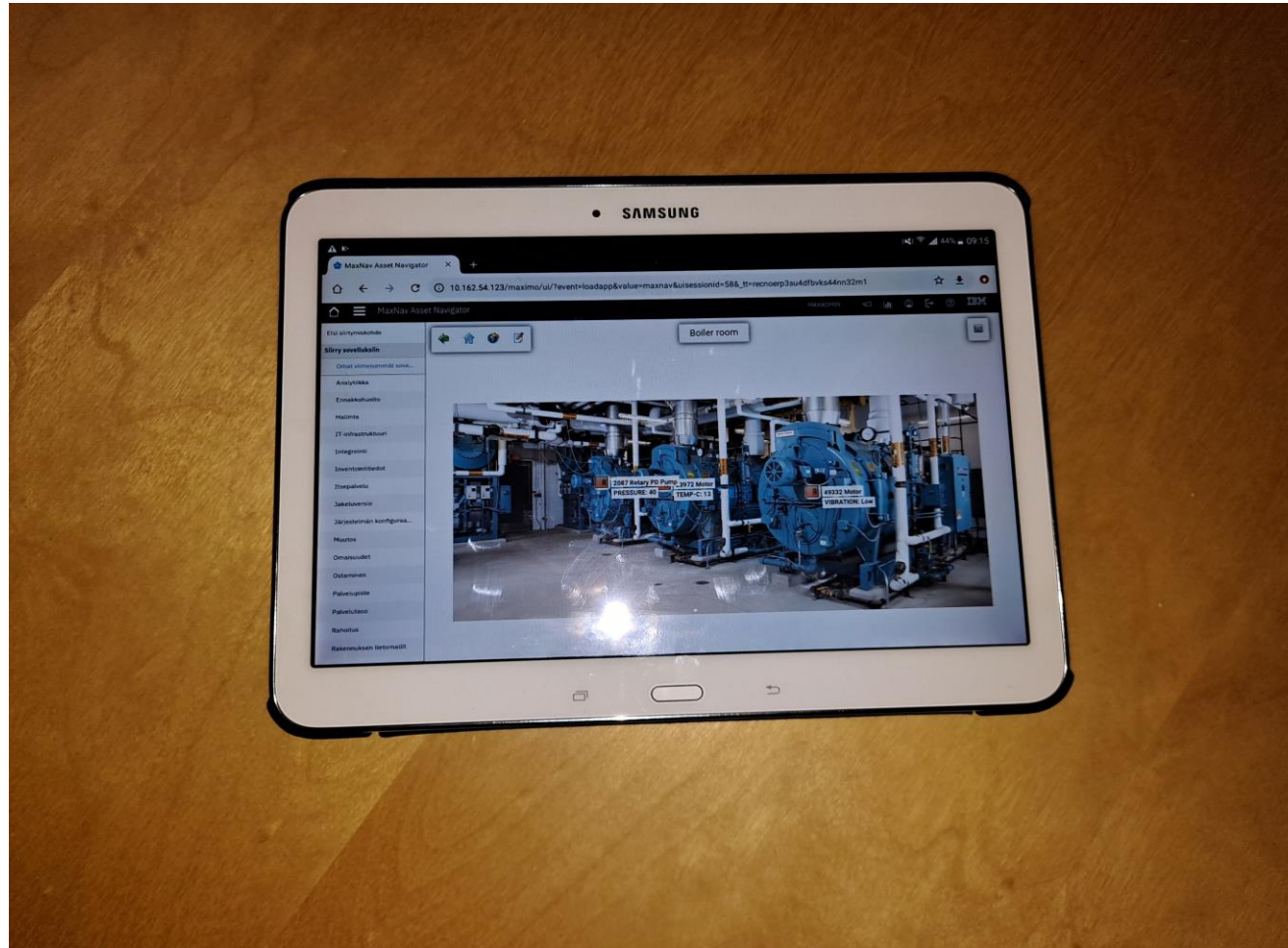
Show meters option per each meter

MaxNav and RapidView Mobile Lite Access Browser View



MaxiPointOy

MaxNav Meters/Tablet Browser



MaxiPointOy

MaxNav High Level Architecture

